



Economic Development Group of Wabash County

Dedicated to creating economic and employment opportunities for the people and businesses of Wabash County.

EDG commits \$20,000.00 in match support of Wabash Marketplace Inc.'s grant application.

Wabash Marketplace, Inc (WMI) is the Main Street organization for the City of Wabash. They secure grants and donations to foster historic preservation and encourage community cooperation to ensure the future of our active and vital downtown Wabash.

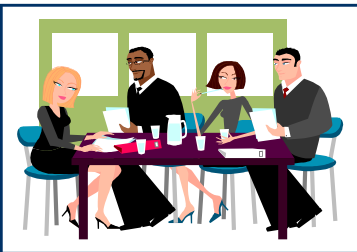
WMI is currently in the process of applying for a grant from the Office of Community and Rural Affairs. This grant will help WMI create a \$20,000.00 Revolving Loan Fund to be used in the same basic target area that EDG has already established as the Tourism and Entertainment District. Earlier in 2007 EDG was awarded a \$100,000.00 Rural Capacity Building Grant from OCRA. This, along with the \$300,000.00 RECAP Grant, allows EDG and Wabash Marketplace, Inc. to partner in making improvements to Wabash's historic downtown.

Wabash Marketplace, Inc.



Great strides have been taken in current years to improve downtown, but there is still work to be done. The monies made available by this partnership will be essential to keeping the "ball rolling" on our downtown restoration. Wabash County has been blessed with a rich historical background and it is imperative that we all use it to our fullest economic advantage.

For more information on what Wabash Marketplace, Inc. does, current projects, or what you can do to help please visit their website at <http://www.wabashmarketplace.org>



Actions of the Board

Economic Development Group's monthly board meeting was held on August 7, 2007 at 7:30 am in the EDG boardroom. The board reviewed (among other things) minutes from June's board meeting and the second quarter Finance Committee meeting, financial reports, president's report and entertained new business items.

Four new business items were approved, included in these business items were: to establish a policy regarding earned interest, granting up to \$20,000.00 in match funds to the Main Street organization, recommending that the city offer a incentive package to an industrial prospect, and approval of the 2006 audit.

EDG's board members are also in the process of our second fundraising push for 2007. Individual and Corporate Memberships are running close to forecast but EDG is always seeking ways to add new membership in our organization.

EDG Board Chair Mr. Jeffrey Buckley has resigned as CEO of Wabash County Hospital and will be relocating after November 1st. Succession discussions began as the Board is contemplating a replacement. Mr. Buckley has been a wonderful Chair and thought leader, he will be deeply missed by the EDG board as well as by the whole community of Wabash County.

EDG Board of Directors

Jeffrey Buckley, Chair

Jeffery Kellam, Vice Chair

Ralph Naragon, Treasurer

Robert Vanlandingham

Skip Daughtry

Dan Hannaford

Rob Pearson

Bill Reed

Lester Templin

President's Report August 2007



William S. Konyha
President

These items were reported on by the President:

- The Economic Redevelopment Commission including; Larry Curless (President), Roger Cromer (Vice President), Brian Dawson (Secretary), Joe Accetta, and Mark Guenin met for the first time on Monday July 30, 2007 to organize, review the economic development plans of Wabash Ag Park and Poet and to authorize Declaratory Resolutions for each project. The meeting was called with sufficient public notice under the Open Door statute. The President acted on the instructions of Bond Counsel and arranged for surety bonds and oaths of office to be administered (by Jane Ridgeway, Wabash County Auditor) before the meeting was convened. EDG personnel will act as staff for the Commission. Also attending the meeting were Jerimi Ullam of Barnes and Thornburg and Mark Branaman of Vieste, LLC. After reviewing the projects, the Economic Development Plans and the schedule the Commission voted to approve both projects and then forward them to the Plan Commission for action on August 2nd. The President attended the Plan Commission meeting on August 2nd with Rich Starkey of Barnes and Thornburg. Mr. Starkey and the President discussed project specifics and Mr. Les Templin, President of the Board of Commissioners and a member of EDG Board was on hand and provided some valuable input. The Plan Commission approved the declaratory resolution advanced by the Redevelopment Commission.
- An industrial prospect, who was introduced to the President by banker Todd Lybarger of North Manchester, has been in contact with EDG to discuss the potential of acquiring the Sun Metals Building in North Manchester to locate first a warehousing operation to be followed by some manufacturing operations. The President has had several meetings with this prospect and has discussed many different avenues that Wabash County can offer to support his growing business and entice them into the area.
- Harvey Industries acquired Hayes Lemmerz Internationals Wabash assets. The President has had numerous conversations with Jerome Harvey (President of Harvey Industries) and Mel Patton (VP). EDG plans to continue our efforts to work with them and to provide the resources that they need to be successful. Mayor Bob Vanlandingham and the President attended the company picnic at Indiana Beach. Both felt it very important to show the employees that the city is working with the Harvey Industries and provide them with a sense of stability. The President believes that this is a very positive development and that the EDG, City and County of Wabash will be able to work through any issues and provide appropriate assistance.

Wabash County Connections



For the latest news from:

**Economic Development
Group**

Wabash Marketplace, Inc.

**Wabash County Chamber of
Commerce**

**Wabash County Convention
and Visitors Bureau**

**North Manchester Cham-
ber of Commerce**

Poet Energy Breaks Ground

Economic Development Group participated in the ground breaking ceremony for Poet Energy in North Manchester on July 13 2007 at 1:30 pm.

EDG staff assisted in the planning of the event and the President was one of the speakers. Les Templin (Wabash County Commissioner) and Dan Hannaford (North Manchester Town Manager), both EDG Board Members, also spoke at the ceremony.



Picture by Wabash Plain Dealer

Mr. Konyha as been in contact with economic development organizations in two additional Indiana counties for Poet. This is in an effort to assist them in expanding within the State. Mr. Konyha believes in expansion assistance for any Wabash County employer anywhere within our purview provided the company is not proposing to relocate.

Poet will offer Wabash County approximately 40 jobs and should open its door sometime between the forth quarter of 2008 and the first quarter of 2009.

**We are always happy to hear from our members! Questions or concerns?
Please contact us at 260-563-5258 or by email at info@edgwc.com**